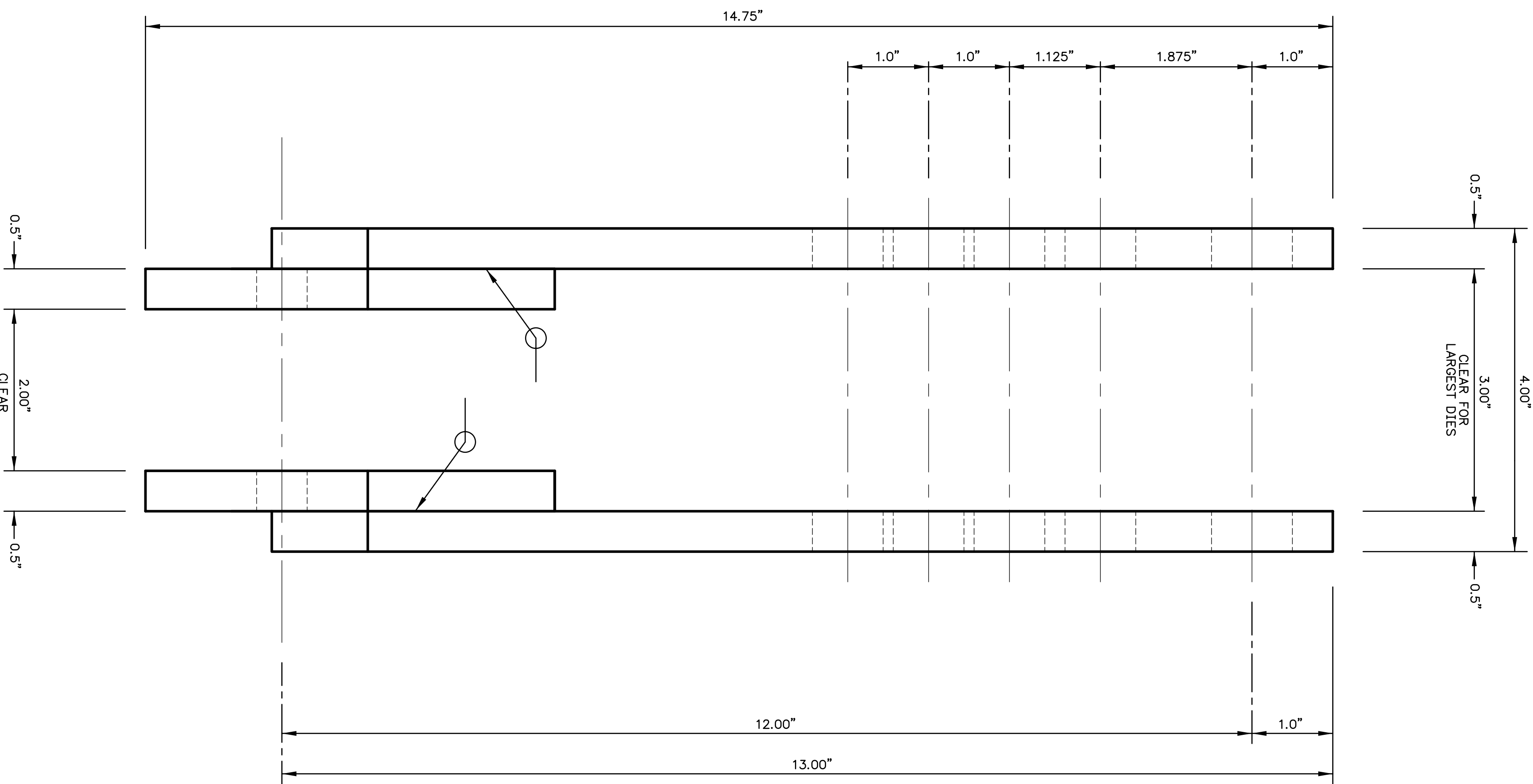
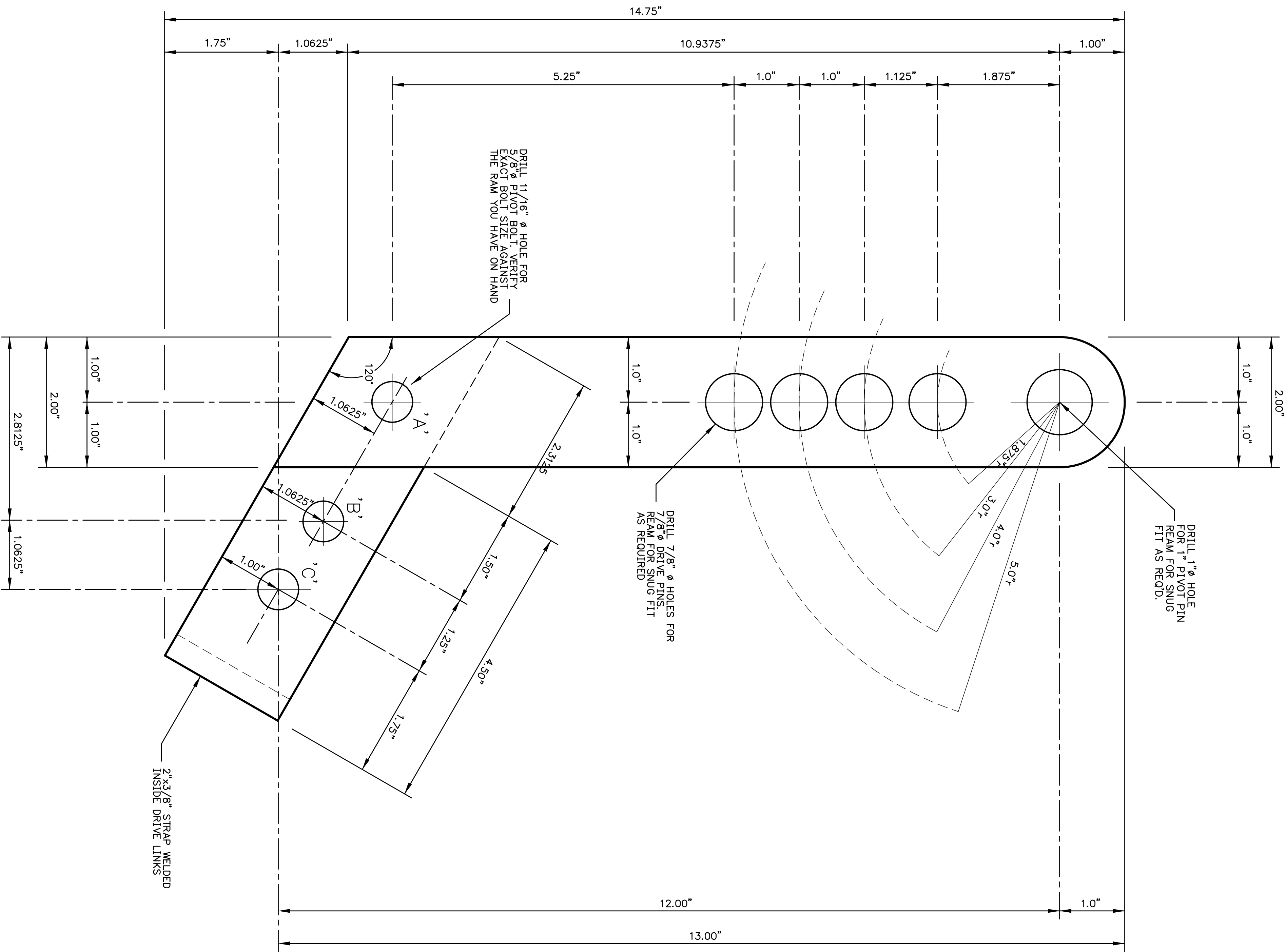


CHOPPER BUILDERS HANDBOOK

© 2001-12 G.W. WEISHAULT, ALL RIGHTS RESERVED.



REAR VIEW



SIDE VIEW

10 TYPICAL DRIVE LINKS
SCALE 1" = 1" (FULL SIZE)
MAKE 1 PAIR FROM 2"x1/2" OR STEEL PLATE

THERE ARE THREE HOLES DRILLED INTO THE LOWER PORTION OF THE DRIVE LINKS WHERE THE RAM DRIVE PIN CAN BE FITTED. THE HOLE FURTHEST FROM THE PIN IS TO BE USED WHEN BENDING TUBING WITH A 5.5" CENTERLINE RADIUS (CLR). THE CENTERLINE RADIUS IS 2.75" AND THE BENDING TUBING ALONG A 3.0" CLR AND THE HOLE LABELED AS 'A' IS TO BE USED WHEN MAKING BENDS IN TUBING WITH A 3.0 TO 3.5" CLR.

-
-
-
-
-
-
-
-
-
-
-
-

GARY W. WEISHAULT

**PERFORMANCE ENGINEERING
CHASSIS FABRICATION
FLOWBENCH TESTING
MACHINE WORK
RESTORATIONS**

231 W. PA 514, UNIT #110
MURPHY, TX 75084
Tel: 972-794-0200
Fax: 972-794-0200
email: gw250@yinet.com

Revision	Date
INITIAL LAYOUT	5-18-11
GENERAL REVISION	6-21-12

Project Title	

**AIR/HYDRAULIC
VERTICAL MOUNT
TUBING BENDER**

**DRIVE LINK
FABRICATION
DETAILS**

Sheet No. **VTB1.6**