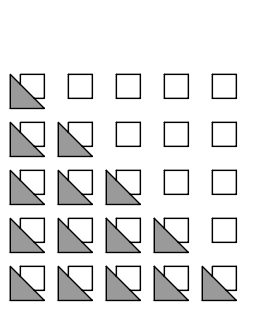


**GENERAL NOTES**

THE DIE SHOWN HEREON IS A TYPICAL 1.25" TUBE DIE AS MANUFACTURED BY JD SQUARED.

MAKE SURE YOU ORDER A 'TUBING' DIE AND NOT A PIPE DIE.

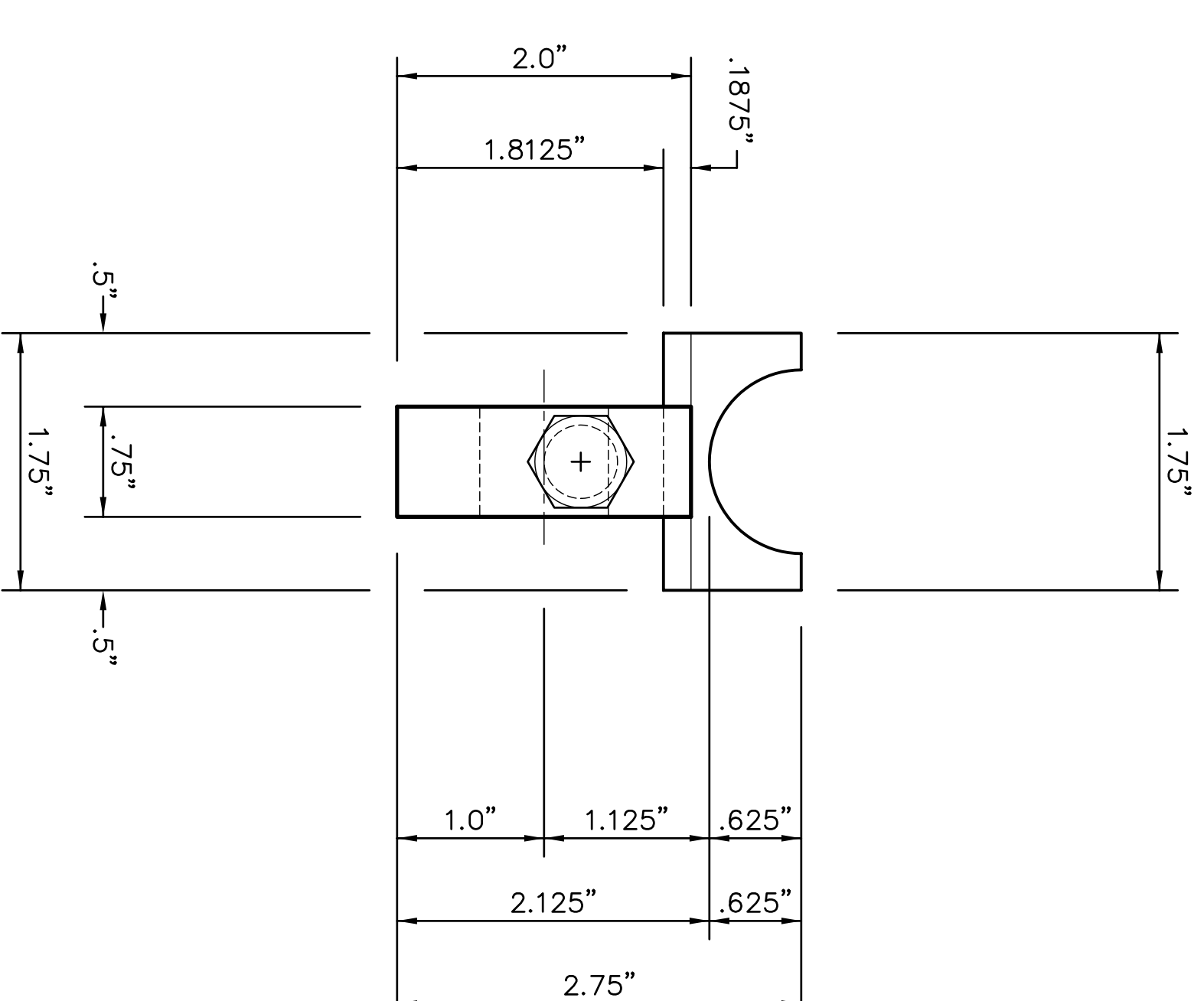
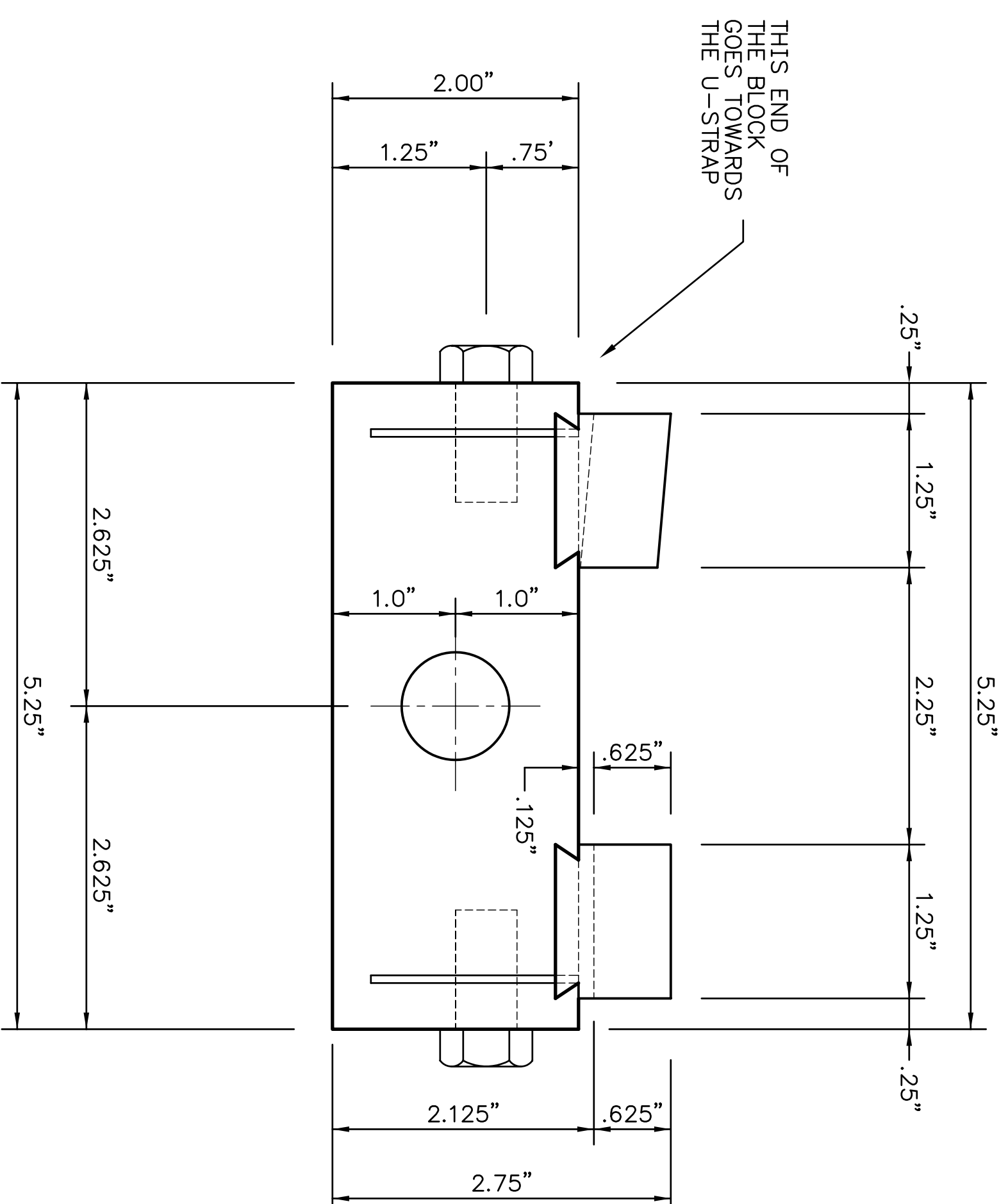
BE SURE THAT THE CAMPING U-STRAP COMES WITH THE DIE SET AS WELL AS THE FOLLOW BAR



**GARY W. WEISHAUP**  
 PERFORMANCE ENGINEERING  
 CHASSIS FABRICATION  
 FLOWBENCH TESTING  
 MACHINE WORK  
 RESTORATIONS

1440 NORTH STATE ST.  
 NAPA, CALIFORNIA 94559  
 PH: 707-252-3427  
 FAX: 707-252-3427  
 email: gwe25@weishaupt.net

Revision	Date
* INITIAL LAYOUT	10-7-04
* GENERAL REVISION	7-20-06

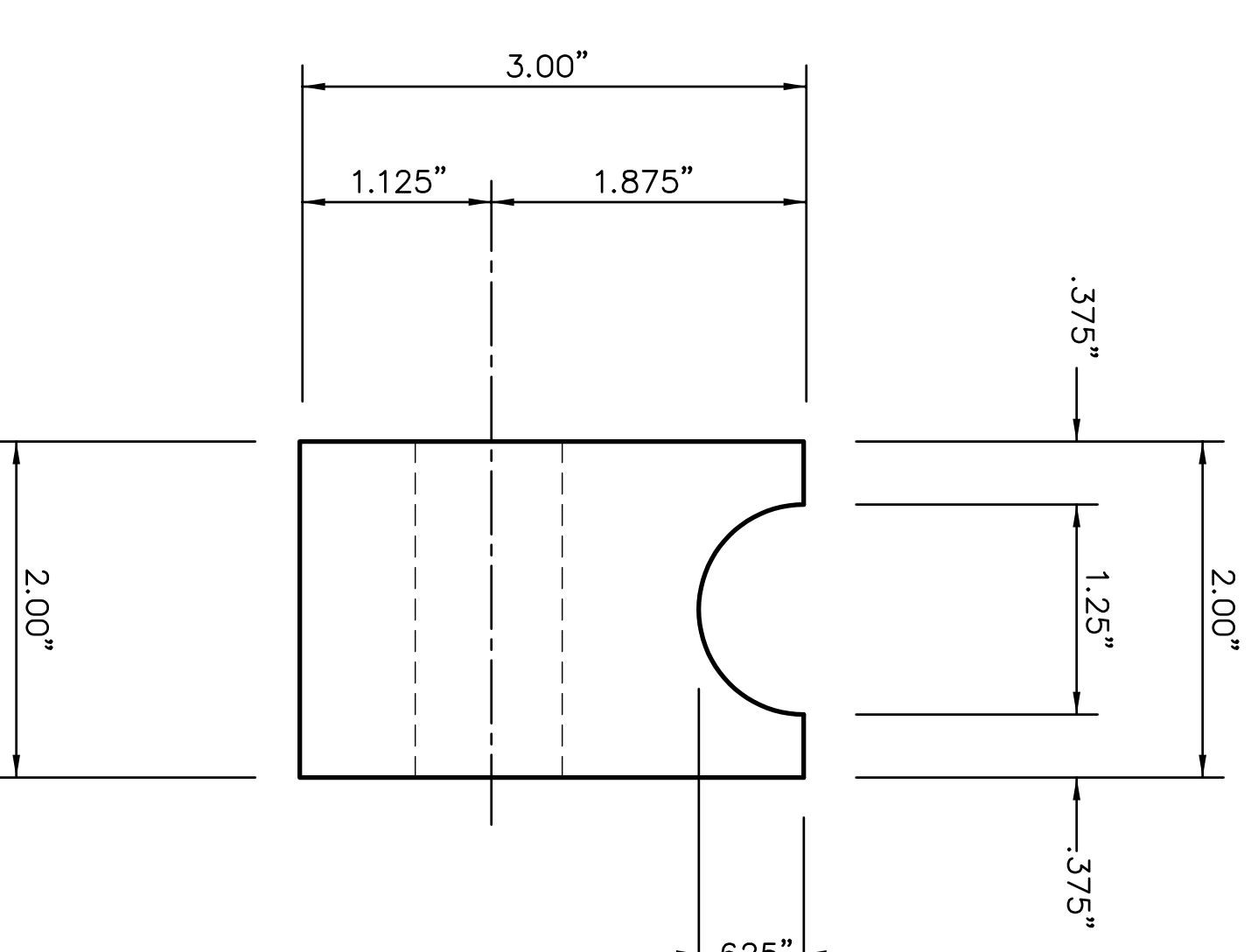
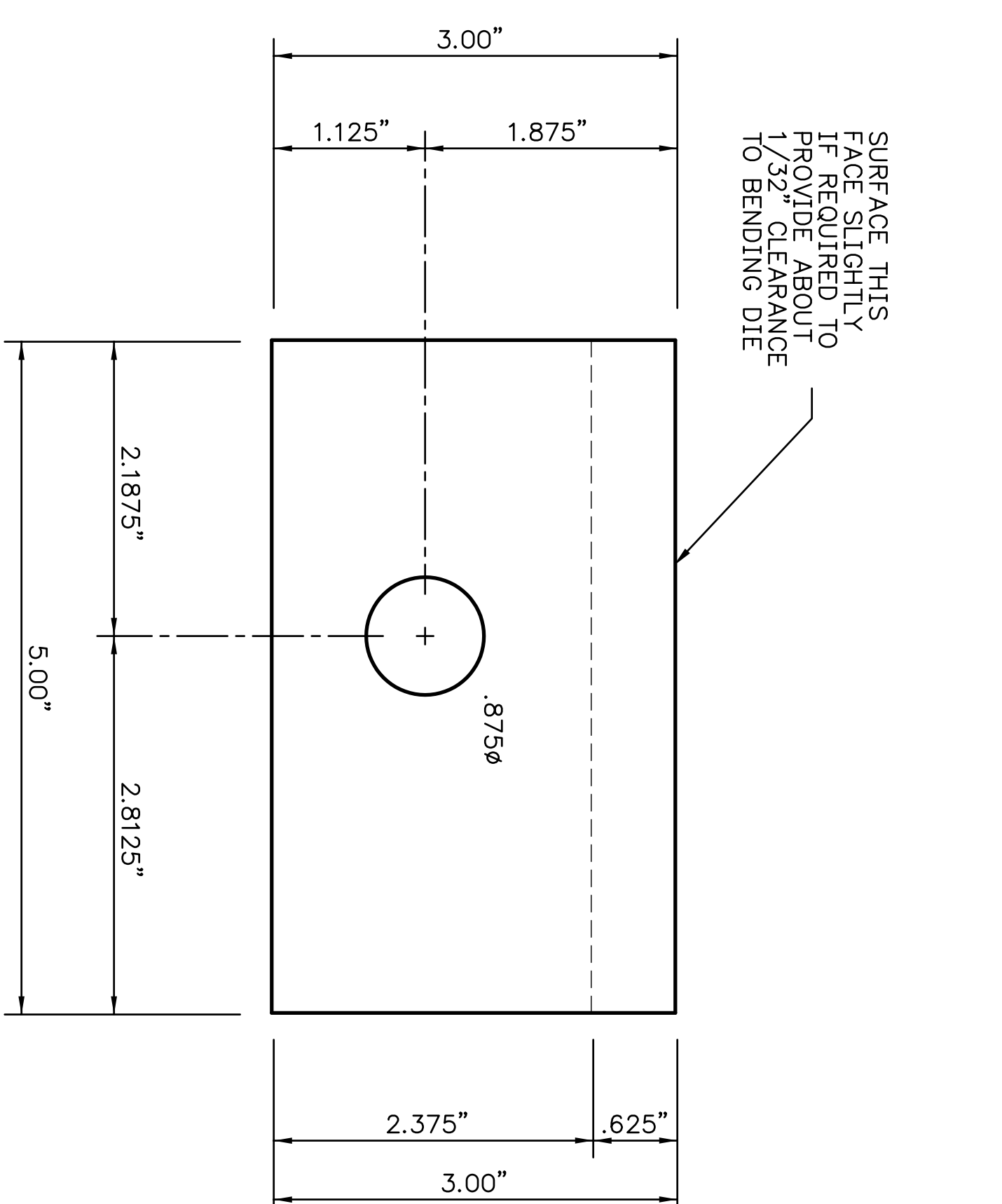


**FOLLOW BAR**  
TOP VIEW

**FOLLOW BAR**  
END VIEW

**JD2 TYPE FOLLOW BAR**

SCALE 1" = 1"



**FOLLOW BAR**  
TOP VIEW

**FOLLOW BAR**  
END VIEW

**ALTERNATE ONE-PIECE FOLLOW BAR**

SCALE 1" = 1"

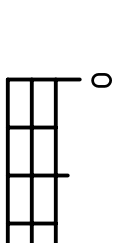
THIS UNIT PROVIDED BY INDEPENDENT MANUFACTURER

Project Title  
**CHOPPER BUILDERS HANDBOOK**

**BUDGET TUBING BENDER**

Drawn By	GMW
Date	7-20-06
Checked By	HJC
Date	7-24-06
Scale	1" = 1"
Title No.	-
Project No.	-

Steel Fabrication  
**TYPICAL FOLLOW BAR**



Sheet No.  
**CBTB-6.1**